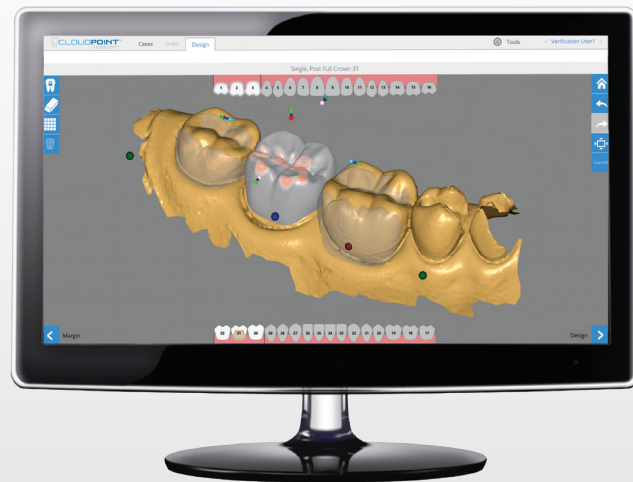


INSTRUCTIONS FOR USE

INTRODUCING THE

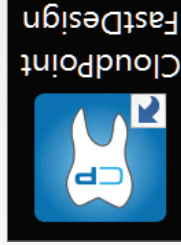
FASTDESIGN™

— *SW 3.3 System*



Case Information

Launch the FastDesign application located on your desktop.



Help videos are available by clicking this icon.



Home Page

Double-click to open a specific case on the home page. Cases will default to sort date, with the latest case located on top of the page. There will be a status icon next to each case.

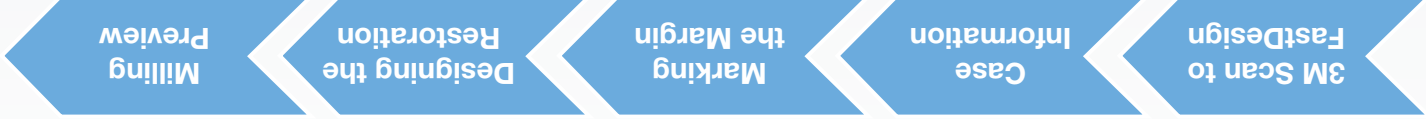
A screenshot of the CloudPoint software interface. The main window displays a list of cases with columns for Case ID, Date, Status, and Name. The top case is highlighted in blue. On the left side, there are several panels: 'Patient Info', 'Restoration Info', 'Fast Crown', 'Case Info', and 'File Attachments'. The 'File Attachments' panel shows a list of files with their names and dates. The top of the window has a navigation bar with 'Cases', 'Order', and 'Design' buttons, and a search bar. The bottom of the window shows a status bar with 'Verification User1' and 'Tools'.

Restoration Information

Go to the order details section on the right of the screen. Select the desired material and then shade on the drop-down menus (in red).

The screenshot displays the CloudPoint software interface for a restoration order. The interface is divided into several sections:

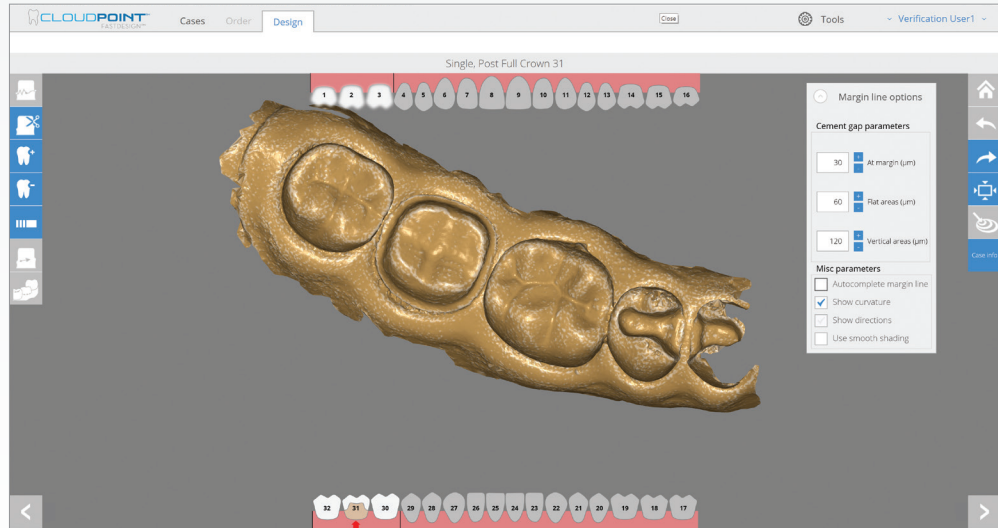
- Header:** "CLOUDPOINT FASTORIGIN" logo, "Cases" tab, "Order" sub-tab, "Design" sub-tab, "Close" button, "Tools" icon, and "Verification User1" dropdown.
- Message:** "Please specify the restoration's material" in red text.
- Order Information:** Case #: 2017-06-26 case_401-uid_5_xord; Doctor: [blank]; Title: Dr.; First name: Guest; Last name: Dentist; Patient: First name: Post; Last name: Single.
- Restorations:** Crown (dropdown menu).
- Materials:** BruxZir Now (dropdown menu).
- Shade:** A1 (dropdown menu).
- Order details:** "Full Crown 31" (dropdown menu) with a blue notification bubble. A tooltip shows: Type: Full Crown; Material: None; Shade: None.
- Patient Info:** A tooth chart with 32 numbered teeth. Teeth 30, 31, and 32 are highlighted in red, indicating the restoration area.
- Comments:** A large empty text area.
- Bottom Right:** "Save and close" and "Design" buttons.



Marking the Margin

Marking the Margin

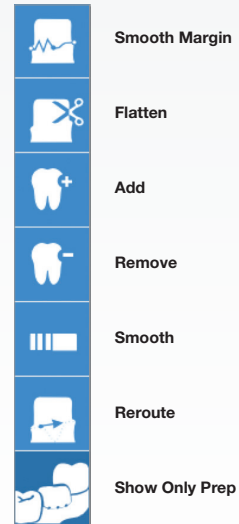
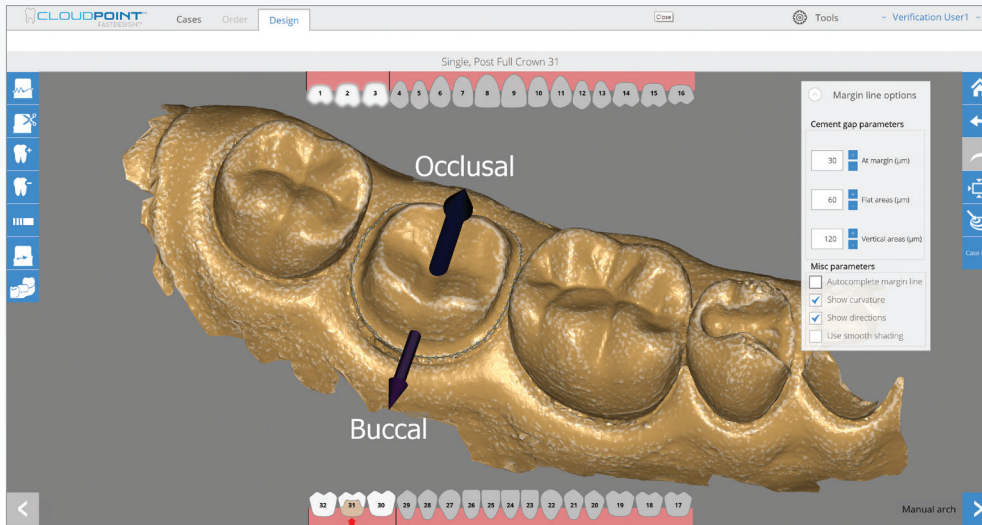
Click on an easy-to-define point on the margin of the preparation. Then, continue to work around the preparation, defining additional points of the margin line. Complete the margin line by clicking on the initial point and closing the loop. To edit the margin, once the loop is complete, click and drag the individual points. To confirm the margin is accurate, refer to the cross section.



Marking the Margin (Continued)

Edit Margin Tools

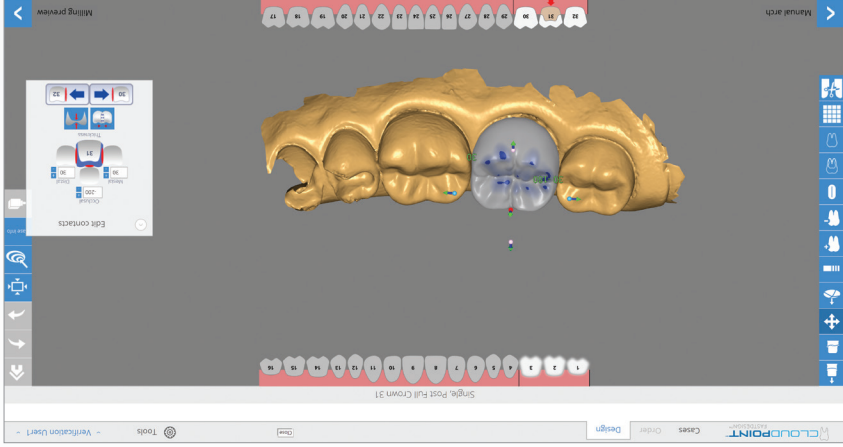
After the margin line is completed, the software will automatically display the occlusal and buccal directions at the prep site. Confirm that the placement and directions are correct. When adjustments are necessary, always adjust the occlusal direction first, and then the buccal direction, by clicking and dragging the arrow to the appropriate direction.



Designing the Restoration

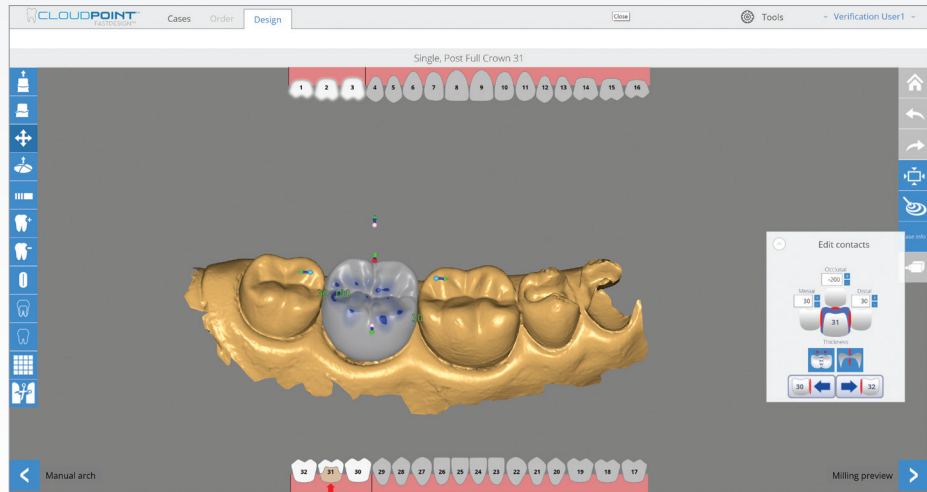
Design Tools

Remove		Insertion	
Grooves		Edit Margin	
Cross Section		Move/Rotate/Scale	
Clip Front		Freeform	
Show Grid		Smooth	
Delete Scan Data		Add	



Design Tools

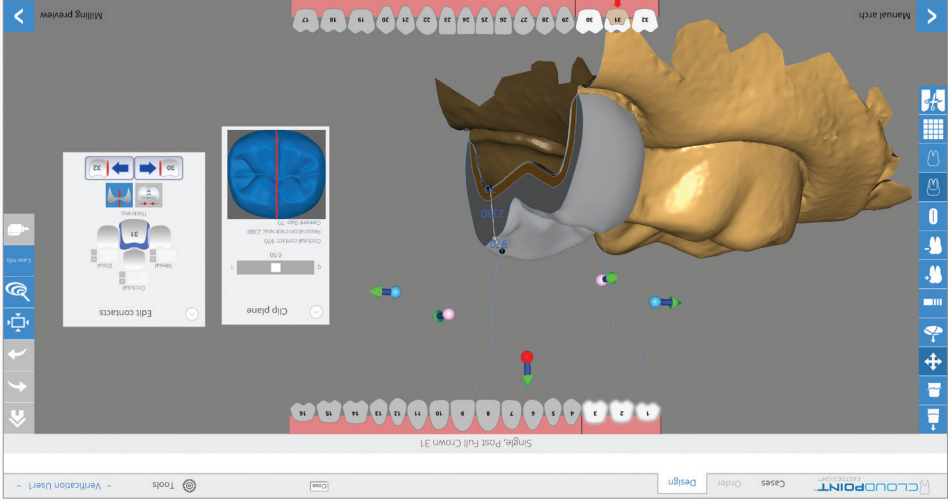
1. Use Move/Rotate/Scale to manipulate the model incrementally. Click and drag cylinders (translate), cones (stretch), and balls (rotate) to make changes.
2. Use Freeform to manipulate the model with unrestricted movements. Click and drag change area.
3. Use Smooth to remove anatomical details from surfaces. To make continuous changes, click and hold while moving the cursor over change areas.
4. Use Add to build up an area when pink reveals the required material thickness is too thin. Use Remove to take away from an area when red indicates a surface is too close to the opposing dentition. To make either of these changes continuous, click and hold while moving the cursor.



Designing the Restoration (Continued)

Cross Section Analysis

For a cross-sectional view, slice the tooth in half using the Cross Section tool. Adjust the viewing plane using the slider.



Cross Section Analysis (Continued)

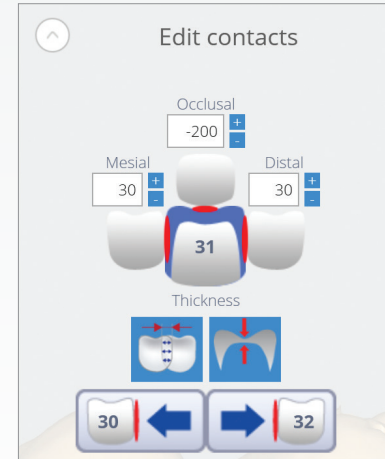
1. Major Movements with Freeform and Move/Rotate/Scale.
2. Auto-fix occlusion.
3. Auto-broaden contacts.
4. Auto-fix thin areas. Use Add and Smooth to fix thin area.
5. If there is concavity, the easiest way to fix is to smooth above or below the concavity.



Edit mesial neighbor spot



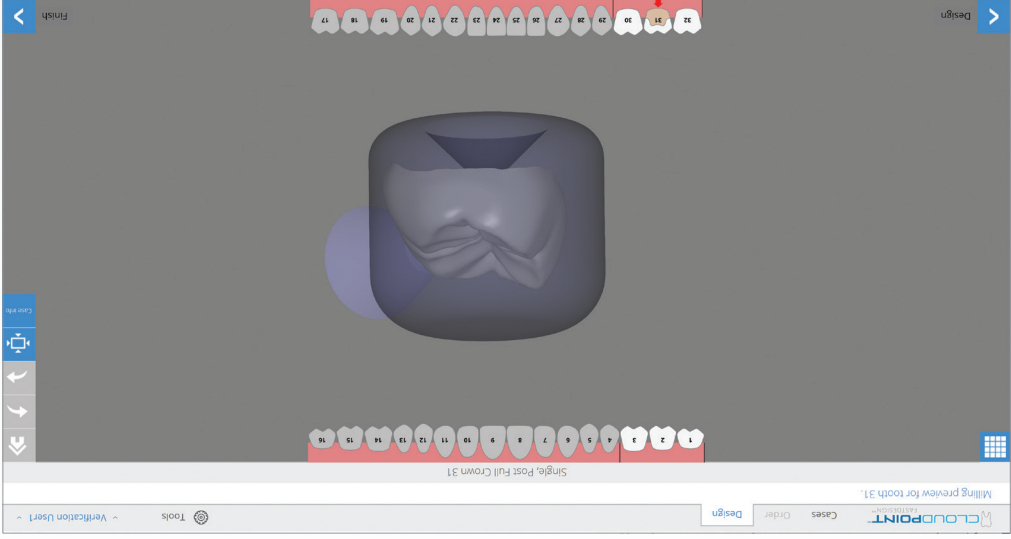
Edit distal neighbor spot



Milling Preview

Milling Preview

The preview will display the CAD/CAM restoration (with sprue attachment) inside a milling block. If the restoration does not fit inside the milling block, return to the design step to make changes. Once the restoration fits, select MILLING and send the final design to the chairside mill.



Confirming Arch Orientation (Optional)

Confirming Arch Orientation (Optional)

If the auto arch is inaccurate, position the model over the prep and line it up with the adjacent teeth using the Erase, Show Grid, and Enable Warping tools.



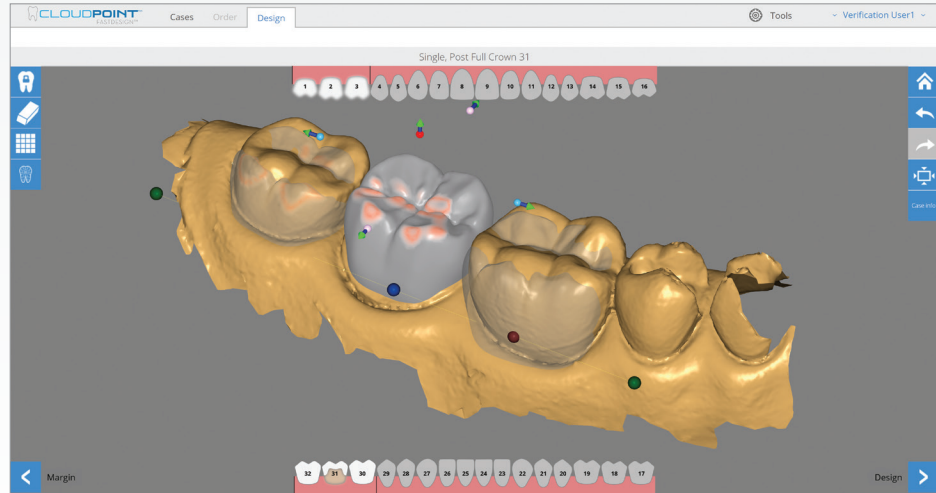
Erase



Show Grid



Enable Warping



FastDesign SW 3.3

Product Description

CloudPoint FastDesign Chairside is a software suite used to design dental restorations including crowns, inlays and onlays from a variety of materials at the dentist's office or in a small dental laboratory.

Indications for Use

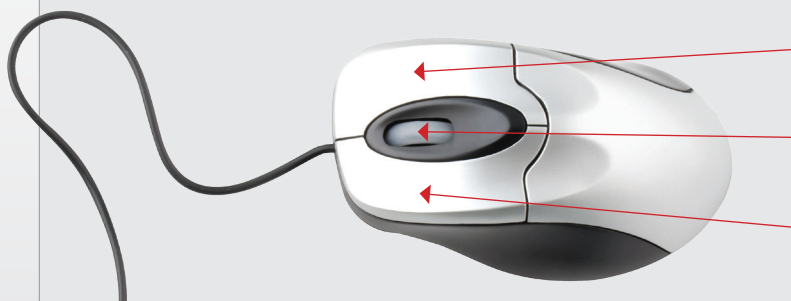
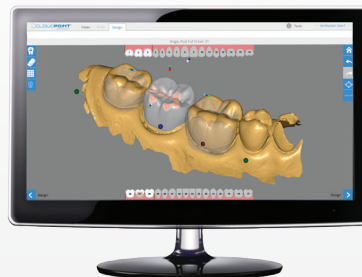
CloudPoint FastDesign Chairside 3.3 is used to design full-contour monolithic dental crown, inlay, and onlay restorations.



Consult Instructions for Use

Notes

INTRODUCING THE
FASTDESIGN™
— *SW 3.3 System*



Using the Mouse

- Move model by right-clicking the mouse, holding and dragging.
- Rotate model by clicking center wheel, holding and dragging. Zoom in and out by rotating the wheel.
- Select the position on item and left-click the mouse to select.



Prismatik Dentalcraft, Inc.
(A wholly owned subsidiary of Glidewell Laboratories)
2212 Dupont Drive
Irvine, CA 92612, USA