

INCLUSIVE[®]
TAPERED IMPLANT SYSTEM

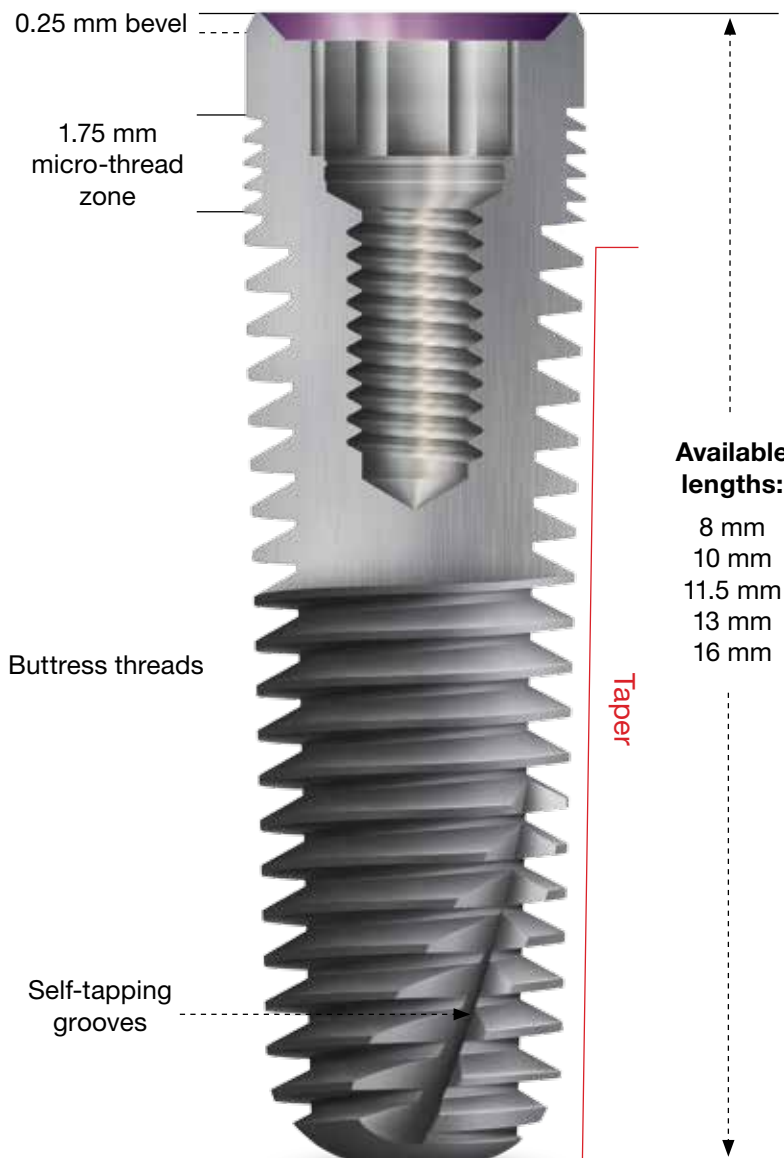


INCLUSIVE®

TAPERED IMPLANT SYSTEM

■ Tapered Implants

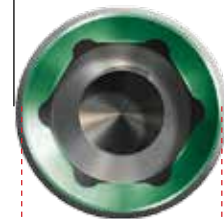
Inclusive® Tapered Implants are designed using a combination of contemporary dental implant features that provide a high degree of primary stability and crestal bone preservation. The apical self-tapping thread pattern allows for smooth insertion and a highly tactile delivery. Inclusive Tapered Implants are available in three major diameters, each of which is available in five lengths. Two standard prosthetic platform sizes (3.5 mm, 4.5 mm) minimize the number of prosthetic system components needed to restore your cases, which eliminates the need for maintaining a large and expensive inventory. The universal, internal hex connection makes for simplified restorative processes. Manufactured utilizing the latest technologies in Irvine, California, the Inclusive Tapered Implant System delivers reliability, predictability and clinical confidence for patients and doctors alike.



Available lengths:

8 mm
10 mm
11.5 mm
13 mm
16 mm

Ø3.7 mm body



Ø3.5 mm platform

Ø4.7 mm body



Ø4.5 mm platform

Ø5.2 mm body

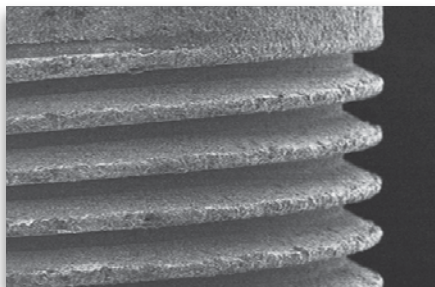


Ø4.5 mm platform

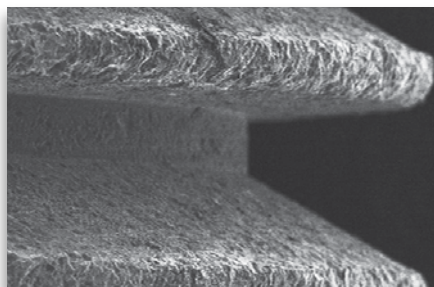
■ RBM Surface Technology

First introduced in the early 1990s, resorbable blast media (RBM) has become one of the most reliable and widely used dental implant surface technologies in the world. The RBM treatment of Inclusive Tapered Implants produces a well-documented, proven surface that leads to high success in all bone types. This RBM surface is created by blasting the implant with a soluble calcium phosphate material, creating a macro surface roughness. The subsequent passivation process results in a highly textured, ultra-clean surface.

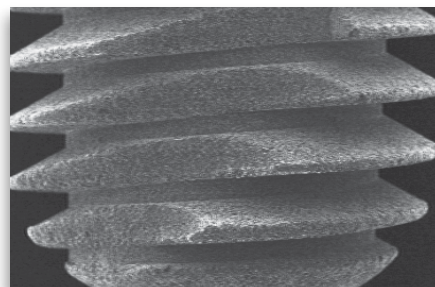
1.75 mm micro-thread zone



Buttress threads



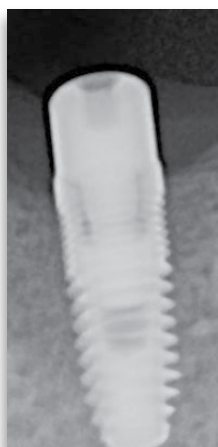
Self-tapping grooves



■ Implant Performance



Inclusive Tapered Implants offer a streamlined surgical protocol, helping to foster predictable soft tissue maintenance around healing abutments.



The design of Inclusive Tapered Implants results in a bone-implant interface that provides a high degree of primary stability, facilitating excellent rates of osseointegration.



Inclusive Tapered Implant prosthetic components offer a universal design, providing a familiar restorative process that promotes consistent and predictable results.



■ Surgical Tray

The Surgical Instrument Tray allows the clinician to easily organize, store and transport the components of the Inclusive Tapered Implant System. It has been designed for ease of use, with component markings and angled rows for easy identification and to maximize space. The durable, synthetic material provides a snug, secure fit.



Distributed by:



Designed & Manufactured
in the USA



PRISMATIK
DENTALCRAFT, INC.

2212 Dupont Dr. • Irvine, CA 92612

3021440_1.0
ECO# 3021439

GD-871-021814